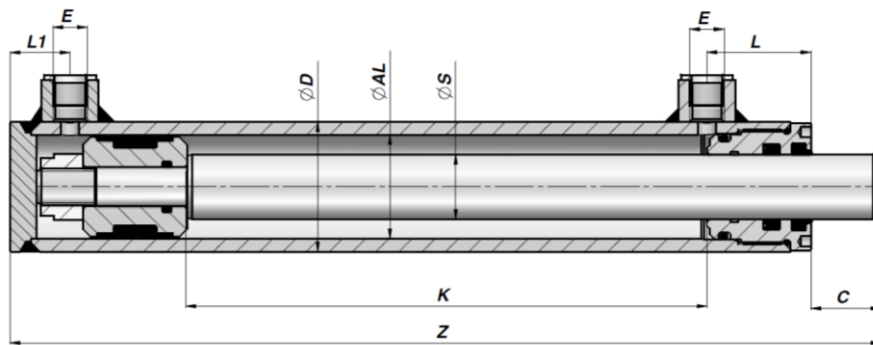


Hydra-Comp

HM0 cylinder Ø90/50



M250

Dobbeltvirkende / Double acting

Max hastighed / Max speed: 0,5m/s

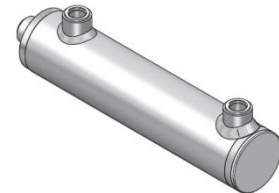
Arbejdstryk / Work pressure: 200 Bar

Spidstryk / Peak pressure: 250Bar

Temperatur / Temperature: -25°C - +80°C

Stempelstang / Piston rod: UNI C45 steel SAE 1045with 25µ +/-5 hard chrome

Rør / Tube: st 52-3 DIN 2393 ISO H9



Codice Code Bestell-Nr.	K	Z	kg	E BSP	L	L1	C
ØD 105 ØAL 90 ØS 50							
HM0090500300	300	486	19,30	1/2"	60	40	23
HM0090500400	400	586	22,64				
HM0090500500	500	686	25,97				
HM0090500600	600	786	29,30				
HM0090500800	800	986	35,97				
HM0090501000	1000	1186	42,64				